

iNEX

External IP feature

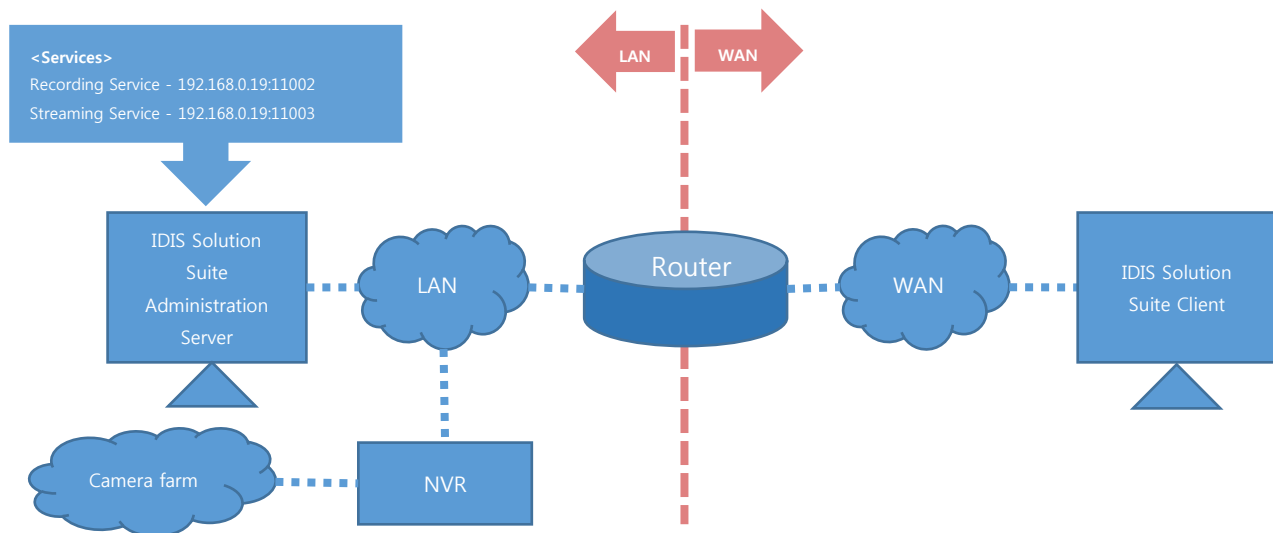
Version 1.0
(June 17, 2015)

Table of Contents

1	Understanding of External IP	3
1.1	Common use of External IP	3
1.2	Objective of External IP	3
1.3	Requirements	3
2	External IP setting in IDIS Solution Suite.....	4
2.1	How to set.....	4
2.2	After the setting	5
3	Port forwarding setting in the router.....	5
	Version History	6

1 Understanding of External IP

1.1 Common use of External IP



1.2 Objective of External IP

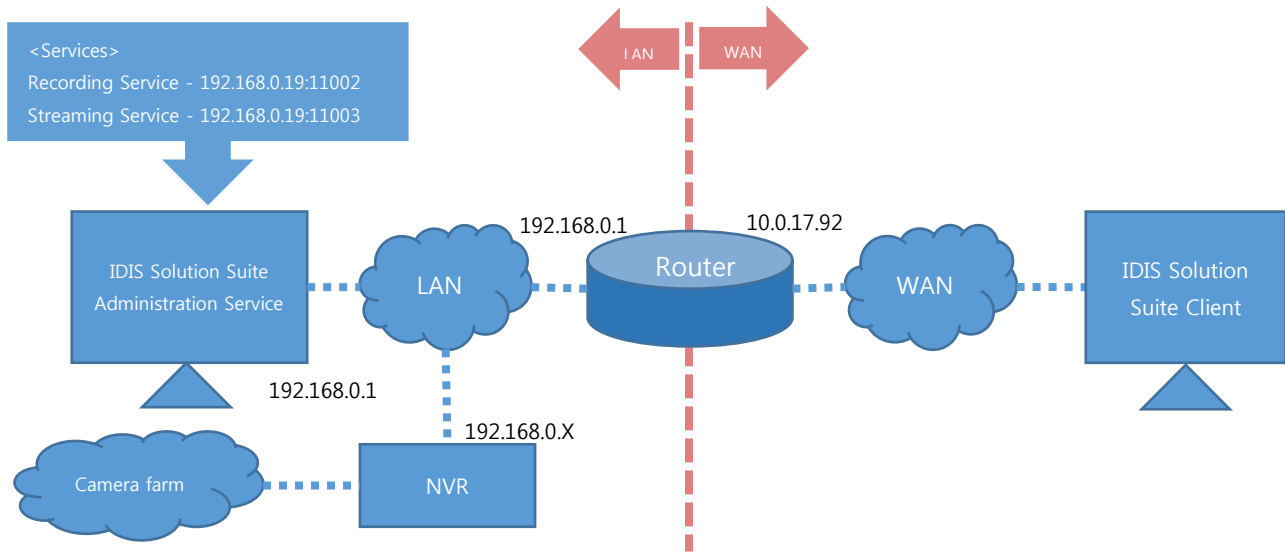
External IP feature enables a client out of the LAN area where IDIS Solution Suite services are running to access over WAN area.

1.3 Requirements

In order to execute External IP feature, there are few tasks to be done.

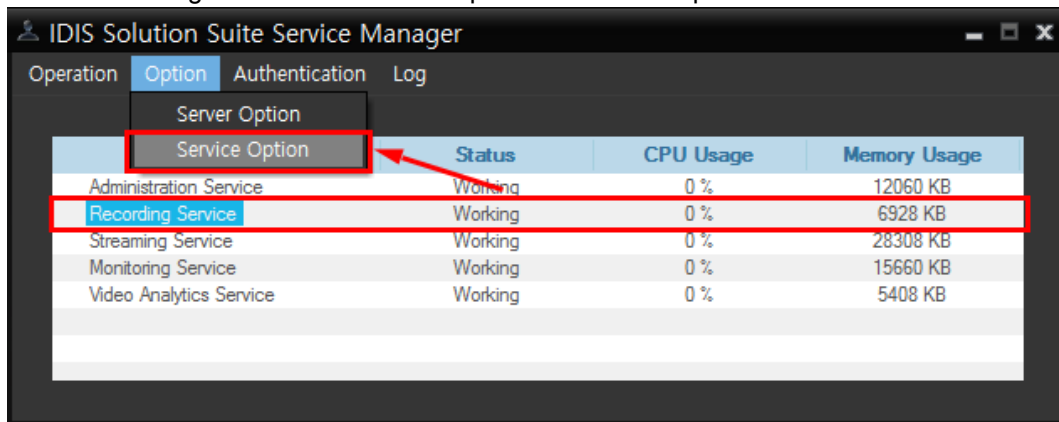
- Port-forwarding setting in a boundary router
- External IP setting in IDIS Solution Suite

2 External IP setting in IDIS Solution Suite

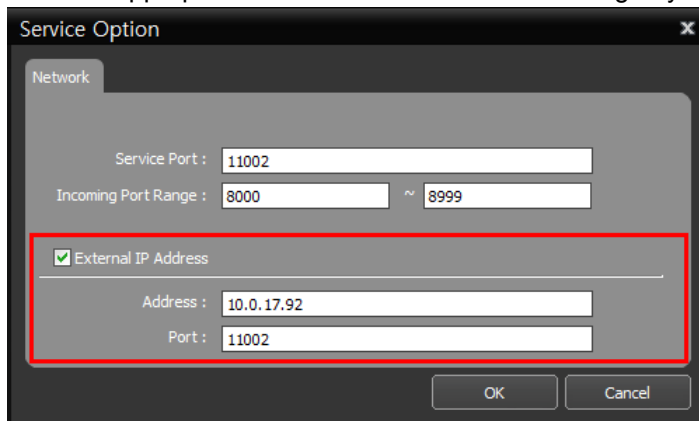


2.1 How to set

- On the PC with Administration Service in IDIS Solution Suite, run "IDIS Solution Suite Service Manager".
- Click "Recording Service" and Go to "Option" > "Service Option" on the menu bar



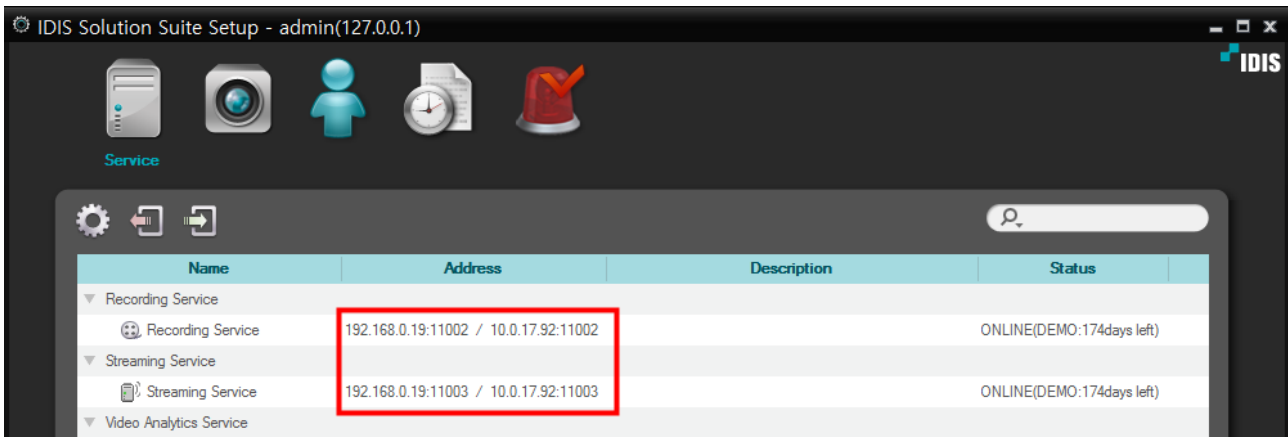
- Fill in an appropriate "External IP address" according to your network circumstance.



- Do the same procedure for other services that you want to access from a remote area.

2.2 After the setting

On IDIS Solution Suite Setup, the configured external IP addresses are listed.

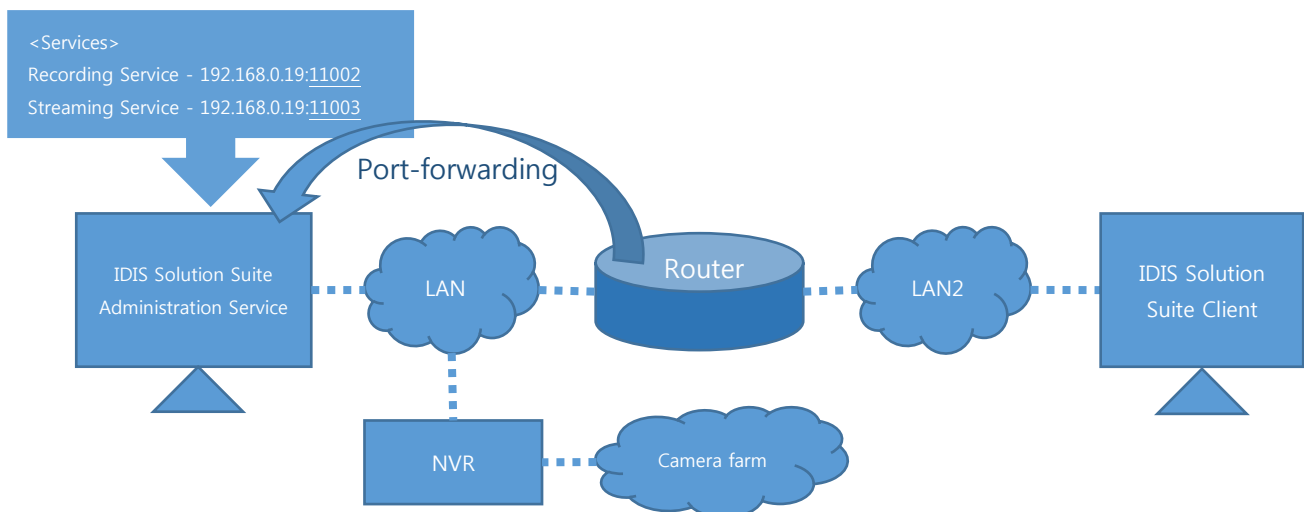


The screenshot shows the 'IDIS Solution Suite Setup - admin(127.0.0.1)' window. It features a navigation bar with icons for Service, Settings, and other functions. Below the navigation bar is a table with the following data:

Name	Address	Description	Status
Recording Service	192.168.0.19:11002 / 10.0.17.92:11002		ONLINE(DEMO:174days left)
Streaming Service	192.168.0.19:11003 / 10.0.17.92:11003		ONLINE(DEMO:174days left)
Video Analytics Service			

3 Port forwarding setting in the router

The area to which port-forwarding should be applied is as the picture below shows.



IDIS Solution Suite Services are running on ports ranged from 11001(Administration Service) to 11007 as default. Please configure NAT setting in the router according to your external port numbers and IDIS Solution Suite service port numbers.

※ Note

Port numbers in the port forwarding should include the port numbers of IDIS Solution Suite services.

Version History

Version	Writer	Revision Date	Remarks
1.00	Glen Oh	June.16.2015	Created